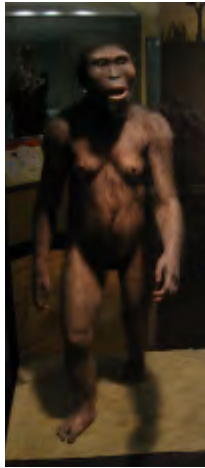




**Stop #8** As you leave the Hall of Dinosaurs and enter the mammals area, look to the left at a display on the evolution of the horse. In 1979, David Raup of the Field Museum discredited this horse evolution theory, yet here it is decades years later in their exhibit. Is this exhibit promoting something real?

\_\_\_ or imaginary? \_\_\_  
(pp. 745-753)

**Stop #9** As you continue through the mammals area, locate the artist's portrayal of "Lucy". To the left of this exhibit is another case showing the bones they found. Notice in particular the foot bones. Compare these bones with the model of "Lucy". Is Lucy's foot in the model based on observation? \_\_\_ or imagination? \_\_\_  
(pp. 542-544)



**Stop #10** Going into the large mammal area, locate the giant sloth. Do we have sloths today?

Yes \_\_\_ No \_\_\_

Is there an explanation given as to why these animals grew so large?

Yes \_\_\_ No \_\_\_

Do creationists have an explanation for these animals?



Yes \_\_\_ No \_\_\_

**Stop #11** Before you take off your critical thinking glasses, continue through the exhibit and out to the main hall, then go to your right and around the corner to where the skull of Sue is displayed. Read the displays that tell of


the condition of Sue's skull when it was found. There are even pictures showing how the skull looked when it was found, and how it looks now. Read also the explanation of how they think Sue may have died. What do you think? Is this a reasonable explanation?  
Yes \_\_\_ No \_\_\_

**Stop #12** One last stop here. Go around the corner and look at the new DNA Discovery Center. Read the information given there. Which theory of origins do you think best explains the complexity of life found just in DNA?



evolution? \_\_\_ or creation? \_\_\_  
(pp. 242-282)

Page numbers given are from The Evolution Cruncher by Vance Ferrell, available online in pdf here: <http://www.evolution-facts.org/Downloads/Evolution%20CruncherP.pdf>. Use it for further study.



This critical thinking guide for the Field Museum is available through Midwest Creation Fellowship [www.midwestcreationfellowship.org](http://www.midwestcreationfellowship.org)  
P. O. Box 952, Wheaton, IL 60187-0952



See the  
Field Museum  
through your  
Critical Thinking  
Glasses

As you enter the Evolving Planet exhibit, put on your **critical thinking glasses**. These glasses won't change what you see. They are a reminder to think about what you see and read, and ask yourself these questions:

- 1) Is this real or imaginary?
- 2) Is this science or art?
- 3) Is this observed or imagined?

**Stop #1** On the left side of the wall facing you as you enter, is a round silver plaque with these words, "All available evidence, which includes fossils, comparative anatomy, and DNA, supports the theory of evolution..."



Is this a true statement?  
 Yes \_\_\_ No \_\_\_

What does this statement tell you about the bias of those who created this exhibit?

What do they believe about life on this planet?

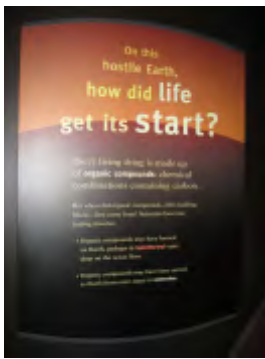
Farther up on this same plaque the exhibit creators talk about evolution being a theory and what it takes to have a scientific theory. Is this a correct explanation of a scientific theory? Yes \_\_\_ No \_\_\_

While they can both be considered models, can either creation or evolution be accurately called scientific theories?  
 Yes \_\_\_ No \_\_\_

**Stop #2** At the last stop we mentioned creation as a model for the origin of life. As you go through the entire exhibit, do you see it mentioned anywhere?

Yes \_\_\_ No \_\_\_

Why? \_\_\_\_\_



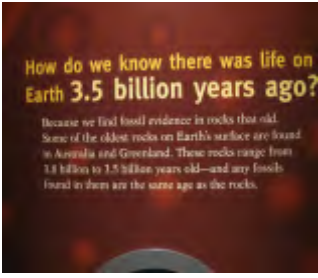
Look at the display titled, "The Origin of Life". What are the 2 ideas presented here?

1 \_\_\_\_\_

2 \_\_\_\_\_

Do either of these speculative ideas explain how inorganic matter became organic matter imbued with life?  
 Yes \_\_\_ No \_\_\_

**Stop #3** Locate the Prokaryotes display and read the paragraph to the left that talks about the age of the fossils. They explain that we know the fossils are 3.5 billion years old because they were found in rock that is 3.5 billion years old.



Watch the video that explains how they know the rock is 3.5 billion years old.

Is this circular reasoning? Yes \_\_\_ No \_\_\_

Is strata dating with index fossils a reliable dating method? Yes \_\_\_ No \_\_\_  
 (pp. 429-436)

**Stop #4** Across from the Prokaryotes display they talk about photosynthesis. Read the explanation given. Do they say where photosynthesis originated?

Yes \_\_\_ No \_\_\_

Is this science? \_\_\_\_\_ or guessing? \_\_\_\_\_

**Stop #5** As you walk through the exhibit there is much artwork by the artist Charles R. Knight.



Is this artwork based on observation? \_\_\_  
 or imagination? \_\_\_  
 (pp. 598-599)

**Stop #6** In the Hall of Dinosaurs find the display that talks about birds being dinosaurs. Look at Archaeopteryx. Does this look like a bird, a dinosaur, or a dinobird? Evolutionists think Archaeopteryx is a transitional form or "missing link" between dinosaurs and birds. Do you agree?



Yes \_\_\_ No \_\_\_  
 (pp. 753-768)

**Stop #7** Looking at all the wonderful dinosaur bones in the Hall of Dinosaurs, can you tell what is real and what was created by a scientist or an artist?

Yes \_\_\_ No \_\_\_

Is this science? \_\_\_ or art? \_\_\_